

Quick User Guide

DB4005

SDR-Based FM Radio Modulation Analyzer and Monitoring Receiver

→ **BEFORE YOU USE THIS PRODUCT** ←

In order to be able to enjoy all the benefits of owning your new DEVA product, please verify first that the latest software and firmware release were installed.

Visit www.devabroadcast.com/downloads for the most recent software and firmware downloads, prior the installation.

This Quick user guide will make the installation of DB4005 SDR-Based FM Radio Modulation Analyzer and Monitoring Receiver quick and easy. Applying these principles, you can simplify the process and save yourself extra time and effort. **For more information about the Safety precautions and the Operating environment recommendations please refer to the User Manual.**

STEP 1 Connection

1. Install the unit on its operation place;
2. Before connecting the AC Power, make sure that the fuse rating is in accordance with the mains supply at your location. DB4005 Power Supply Factory Settings are: 100-240 V AC; 1A Fuse.;
3. Connect the antenna cable to the RF antenna input connector located on the rear panel of the device;
4. Plug the headphones into the front panel jack;
5. Use the "LEFT" or "RIGHT" Navigational Buttons to find strong local station that could be clearly heard through the phones.

The Positive and Negative deviation will be selected automatically upon DB4005 powering on and both the POS DEV and NEG DEV LED indicators will be lighted.

We recommend you, unless there is a reason for doing otherwise, the FM Modulation Metering display to be kept in a default mode. This will guarantee you exact measurement of the station's carrier deviation.

STEP 2 Configuration

DB4005 can be operated in three methods. Through the Front panel navigational menu, DEVA Device Manager Software or via a standard WEB Browser.

For more information about the Front panel navigational menu, please refer to the User Manual which can be found on www.devabroadcast.com/downloads

STEP 3 WEB Interface

There are two options for access to the WEB Interface of DB4005 SDR-Based FM Radio Modulation Analyzer and Monitoring Receiver. The first one is through manual identification of the IP address of the device, and the second one is through the Network discovery option (*For Windows 7 users only*).

STEP 3.1 Manual IP Address Identification



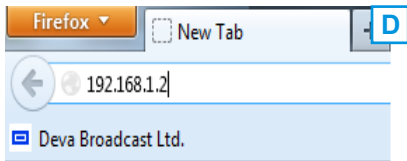
Connect the device to a local network or to the Internet by a LAN cable. Through the Front panel navigational menu pressing the "OK" button you will enable you to enter the device main menu (A).



Using the "Right" navigational button find the "Status" section located at the end of the Menu (B). Press the "OK" Button to enter the "Status Section". Via the Front panel navigational menu press the "DOWN" button.



This operation will visualize the screen (C) containing information about the IP Address of the device.



Open a new WEB Browser and enter the device IP address in the address field then press "Enter" (D).

A window that requires username and password will appear. (For more information refer to **Step 4**)

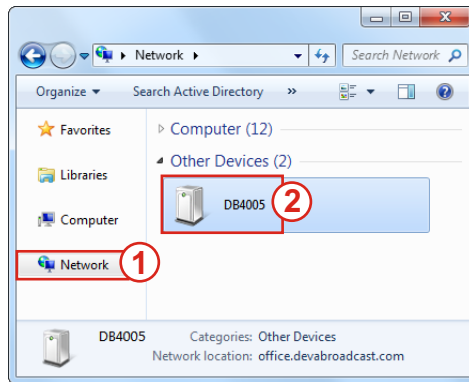
NOTE: Due to the inability of some WEB Browsers to read the IP address format displayed on the screen of the device, the numbers included in the IP Address must be written without the leading zeros. For example: **192.168.020.095** must be written as **192.168.20.95**

STEP 3.2

Network discovery for Windows 7

Network discovery is a network setting that defines whether your computer can see (find) other computers and devices on the network and whether other computers on the network can see your computer. By default, Windows Firewall blocks network discovery but you can enable it.

1. Open Advanced sharing settings by clicking the Start button, and then on "Control Panel". In the search box, type "network", click "Network and Sharing Center", and then, in the left pane click "Change advanced sharing settings";
2. Select your current network profile;
3. Click **Turn on network discovery**, and then click Save changes. If you're prompted for an administrator password or confirmation, type the password or provide confirmation.
4. To access the device open a new Explorer bar and click on (1). If you have successfully enabled the network discovery option, the device will be displayed. Double click on (2) will open a new WEB browser window requiring username and password. (For more information refer to **Step 4**).



NOTE: If you have already enabled this function on your computer just open a new Explorer bar and click on (1). The device must be displayed. If not follow the instructions from **Step 3.1** or **Step 3.2**

STEP 4

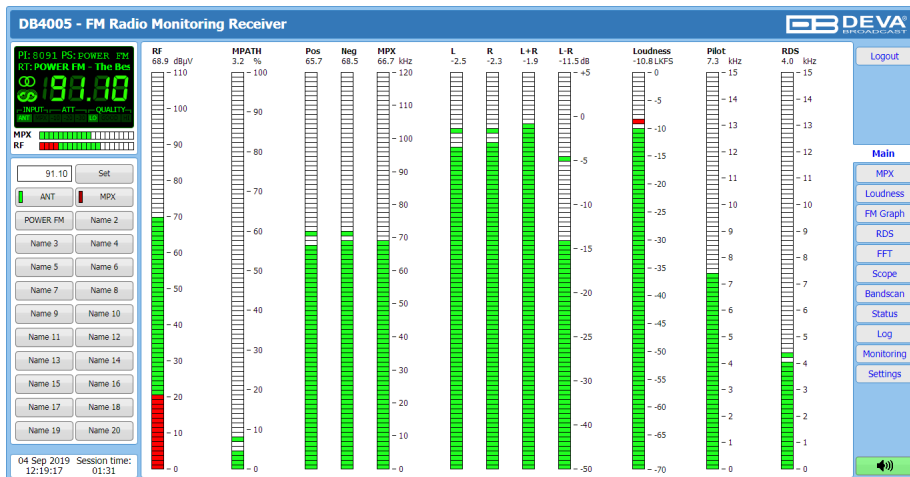
Device Access

The DB4005 provides you with a protected access to the device settings. You can choose between two types of log in:

1. As an **ADMINISTRATOR** – which will give you full control over the settings (username: *admin*, password: *pass*);
2. As a **USER** – this type of log-in will allow you to monitor the device and choose different stations without applying settings (username: *user*, password: *pass*).

In order to make the necessary adjustments to the device, please log in as ADMINISTRATOR.

A successful log in the Control Window will look like this:



STEP 5

DEVA Device Manager Software

DEVA Device Manager is software to control several devices from DEVA's wide range of product line. Developed to support an increasing demand for data processing applications for FM Monitoring, DEVA Device Manager is fully compatible with:

- DB4004 – DSP-based FM Radio Monitoring Receiver;
- DB7000 – FM Radio Re-Broadcast Receiver;
- Radio Explorer II – Mobile FM Radio Analyzer;
- DB4005 – SDR-Based FM Radio Modulation Analyzer and Monitoring Receiver

Aimed at facilitating the use of our products, DEVA Device Manager Software is free of charge. The latest release can be found on our website www.devabroadcast.com/downloads or on a supplied CD accompanying the purchased product.

In order to avail yourself of all provided by the software advantages, please refer to DEVA Device Manager Software's user manual which could also be found on our website.

Please refer to the User manual for detailed information on how to configure and explore your device.